



## Water Quality Monitoring Accident Management Plan – **South Maui**

This information should be disseminated to all surveyors and all water quality support personnel operating in the area of South Maui. These procedures should be followed in response to an emergency.

### **A. LIFE THREATENING CONDITIONS | EMERGENCY RESPONSE**

#### **1) Call for Help**

Call **911** or another Emergency Medical Service

- Police Department: **911** or (808) 875-8190
- Fire Department: Kīhei (808) 879-2741 or Wailea (808) 874-8520
- Coast Guard: (808) 986-0023 or (800) 552-6458
- Lifeguard Towers: 911
- Hawai‘i Poison Control: (800) 222-1222

#### **Call Hui O Ka Wai Ola Contacts**

- Program Manager: Liz Yannell
- Program Coordinator: Christiane Keyhani
- South Maui Team Lead: Ylenia St-Louis
- West Maui Team Lead: Emily Johnson
- West Maui Team Lead: Jess Erwin

#### **2) During the Emergency Call**

*Listen carefully and do exactly what the dispatcher asks you to do.*

Be prepared to provide the emergency dispatcher with the following information:

- **Your location** – approximate GPS coordinates

##### **- North Kīhei Team**

- Mā‘alaea Harbor Mouth (20.79037, -156.51086)
- Mā‘alaea Condos (20.79485, -156.50663)
- Haycraft Park (20.796414, -156.503198)
- Keālia Pond (20.794936, -156.485587)
- Kīhei Canoe Club (20.781403, -156.463176)
- Kalepopepo North (20.765132, -156.459344)

##### **- Wailea-Mākena Team**

- Ulua Beach (20.69112, -156.444201)
- Palau‘ea Beach (20.669565, -156.442907)
- Maluaka Beach (20.645598, -156.443859)
- ‘Āhihi-Kīna‘u North (20.618366, -156.437572)
- ‘Āhihi-Kīna‘u South (20.6138, -156.436853)

##### **- Kama‘ole Team**

- Waipu‘ilani Park (20.755056, -156.459602)
- Kīhei South (W Lipoa Street) (20.747334, -156.457881)
- Kalama Park (20.730973, -156.45372)
- Cove Park (20.727434, -156.450077)
- Kilohana Drive (20.702214, -156.445921)
- Keawakapu South (20.695939, -156.444632)

- **Phone number** you are calling from
- **Person’s problem** or the type of incident
- Approximate **age**

- Is he or she **conscious/breathing**?

*Stay on the line until you are instructed to hang up.*

### 3) Provide Emergency Care – First Response

*While waiting for emergency personnel to arrive, administer First Aid or CPR.*

- Evaluate airway, breathing and circulation (ABCs) and initiate CPR if necessary.
- Keep the victim comfortable and supine. If able and not experiencing an altered level of consciousness, have the victim drink water. Guard against exposure, and monitor for shock.
- If a person is conscious, look to see if they are alert (with eyes open), verbal (responding to simple questions and instructions), responsive to pain (if no verbal activity, is the victim reactive to a pinch?), or unresponsive.

### 4) Record Information

- Record time of accident, signs and symptoms, pallor, and observations.
- Locate the person's Emergency Contact Info in the Field Clipboard and have it readily available.
- After the emergency has passed, fill out an Injury/Illness Incident Report Form found in the First Aid Kit Backpack.

## **B. NON - LIFE THREATENING CONDITIONS | EMERGENCY RESPONSE**

### 1) Non-Life Threatening Emergency Response

For non-life threatening conditions (e.g. sprains, minor allergies, a wound needing stitches, etc.) **call the Program Manager** or the Program Coordinator to alert them to the situation

- Program Manager: Liz Yannell
- Program Coordinator: Christiane Keyhani

### 2) Provide Emergency Care – First Response

- Transport the victim to the medical care facility nearest your current location.
- For a conservative approach, take the victim to Maui Memorial Hospital in Kahului which can accommodate most healthcare needs, especially in the instance a non-life threatening emergency becomes life-threatening. Otherwise, the clinics and facilities nearest you may serve you well.
- If driving to a clinic, have a team member call the clinic's number to see if they can manage your current non-life threatening emergency situation. If not, go to the nearest hospital.

### 3) Record Information

- Locate the person's Emergency Contact Info in the Field Clipboard and have it readily available.
- After the emergency has passed, fill out an Injury/Illness Incident Report Form found in the First Aid Kit Backpack.

## **SOUTH MAUI MEDICAL CARE FACILITIES**

### **KAHULUI, MAUI**

#### **MAUI MEMORIAL MEDICAL CENTER**

<http://www.mauimemorialmedical.org/>

221 Mahalani St, Wailuku, HI 96793

(808) 244-9056

**Hours of operation:**

Monday – Sunday: 24 hours

#### **Inpatient Services offered:**

Bariatric Surgery, Behavioral Health, Cancer Care, Cardiology, Cardiac Surgery, Interventional Cardiology, Endoscopy, Gastroenterology, Hospitalists, Imaging, Kidney Care, Lab Services, Maternity, Neurology, Neurosurgery, Nutrition services, Orthopedics Joint Replacement, Pediatrics, Pharmacy, Rehabilitation, Respiratory Therapy, Stroke Care, Surgical Services, Vascular Surgery, Wound & Ostomy Care

#### **Outpatient Services offered:**

Cancer Care, Emergency Room, Endoscopy, Imaging, Lab Services, Mammography, Rehabilitation, Same Day Surgery, Wound & Ostomy Care (with a referral)

### **KĪHEI, MAUI**

#### **KIHEI-WAILEA MEDICAL CENTER**

<http://kiheiwaiileamedicalcenter.com>

Piilani Village Shopping Center

221 Piikea Ave, Suite A

Kīhei, HI 96753

(808) 874-8100

**Hours of operation:**

Monday – Friday: 8am–6pm

Saturday: 8am-5pm

Sunday: 8am-1pm

#### **Services offered:**

Urgent Care, X-Ray & Ultrasound, Referrals, Prescription Refills, Specialists

### **MINIT MEDICAL URGENT CARE CLINIC**

<https://www.minitmed.com/>

1325 South Kīhei Rd, Suite 103

Kīhei, HI 96753

(808) 667-6161

**Hours of operation:**

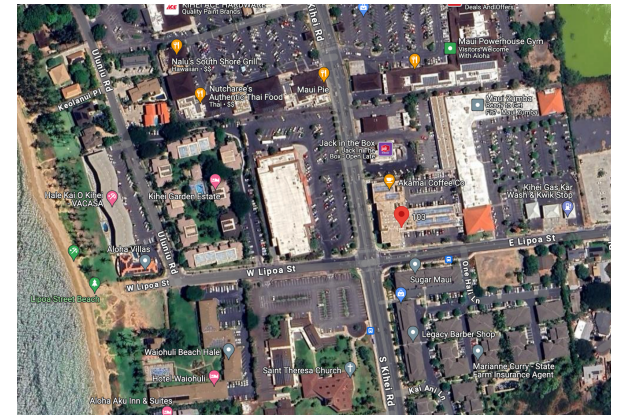
Monday – Friday: 8am-7pm

Saturday: 8am-6pm

Sunday: 8am-4pm

#### **Services offered:**

Urgent Care, Physical Therapy, Pediatric Care, Colds and Flu, Ear Infections, Onsite X-Ray, Workers Compensation, UTI, Fractures



**WAILEA, MAUI**  
**DOCTORS ON CALL MAUI'S URGENT CARE**

<http://doctorsoncallmaui.com/>

The Shops at Wailea  
3750 Wailea Alanui Dr, B34 Level 1  
Wailea, HI 96753  
(808) 875-7676

**Hours of operation:**  
Monday – Saturday: 8am-4pm

**Services offered:**

Urgent Care, Digital X-Ray, Lab Testing, EKG, Breathing Treatments, Minor Surgical Procedures, Sutures & Removal, Wound Care, Minor Fracture Care, Flu Shots, Sports/PADI/PUC/Work Physicals, Tetanus Vaccination, Ear Wax Removal, Incision and Drainage of Abscesses, Manipulation of Bone Dislocations, Sea Urchin Removal, Thorn Removal, TB Testing, Prescriptions, Referrals to Specialists

**MODO URGENT CARE MEDICAL CONCIERGE**

<http://www.modomd.com/>  
34 Wailea Gateway Pl, A106  
Kīhei, HI 96753  
1(888) 663-6631

**Hours of operation:**  
Monday – Sunday: 8am-10pm

**Services offered:**

Urgent Care Visits to Treat all Infections and Injuries: COVID-19, Strep Throat, UTI, Rashes, Abdominal Pain, Lacerations, Fractures, Diarrhea, Vomiting, Ear Infections, Sea Urchin, ECG and Ultrasound and the ability to order labs, X-Ray and CT scans, Referrals to any Specialists

**URGENT CARE WAILEA MAKENA**

<http://www.urgentcarewaileamakena.com>  
100 Wailea Ike Dr,  
Wailea, HI 96753  
(808) 281-6580

**Hours of operation:**  
Monday – Sunday: 8am–5pm

**Services Offered:**

Urgent Care, Breathing Treatments, Cardiac Monitoring, Ear Wax Removal, EKG, General Physicals (Sports, SCUBA), 15 minute CBC BMP blood draws, Incision & Drainage of Abscesses, IV Fluid & Blood Draws, Jellyfish Stings, Manipulation of Bone Dislocations, On-Site Prescription Dispensary, Prescription Refills (non-narcotic), Referrals to Specialist, Sea Urchin / Foreign Body Removal, Sexually Transmitted Infections, Suture Removal, Tetanus Vaccination, Rapid Tests (Strep, Flu, RSV, Mono, Covid19), Tuberculosis Test (PPD), Wound Care, X-Ray on Site

